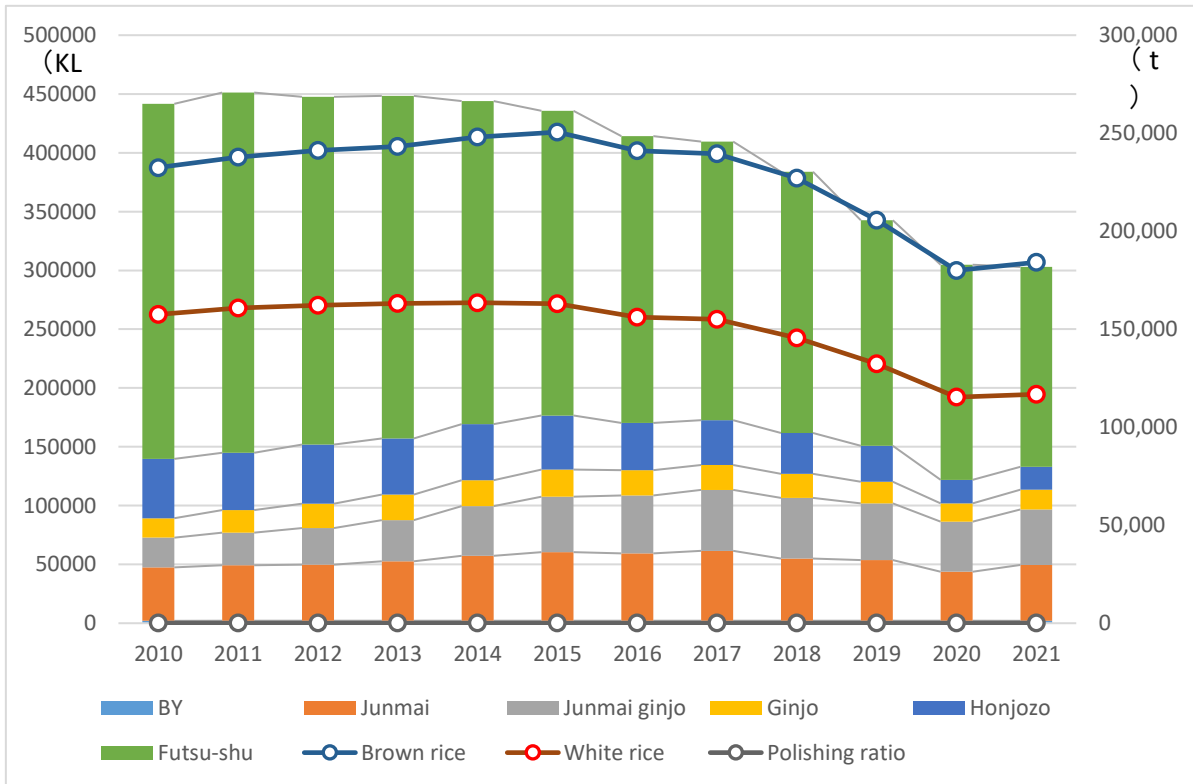


Sake production and rice consumption



BY	2010	2011	2012	2013	2014	2015	2016	2017	2018	2019	2020	2021
Junmai	45,512	47,259	47,745	50,647	55,398	58,322	57,491	59,519	52,970	51,778	41,744	47,636
Junmai ginjo	25,211	27,772	31,245	35,020	42,063	47,348	49,103	51,831	51,488	48,147	42,639	47,071
Ginjo	16,544	19,179	20,745	21,761	22,105	22,984	21,489	21,149	20,557	18,445	15,432	16,870
Honjozo	50,565	48,666	50,113	47,718	47,558	45,947	40,232	38,144	34,821	30,462	20,082	19,482
Futsu-shu	301,818	306,296	295,868	291,290	274,721	259,120	243,955	236,920	221,914	191,664	182,761	169,854
Brown rice	232,421	237,791	241,160	243,217	248,019	250,537	241,022	239,517	227,025	205,662	179,985	184,099
White rice	157,521	160,801	162,127	163,057	163,519	163,005	156,110	155,007	145,619	132,282	115,342	116,852
Polishing ratio	67.1	66.9	66.3	66.2	65.4	64.6	64.0	63.5	63.0	63.2	63.4	62.5

Source: NTA * Volume (KL) based as 20% alcohol content